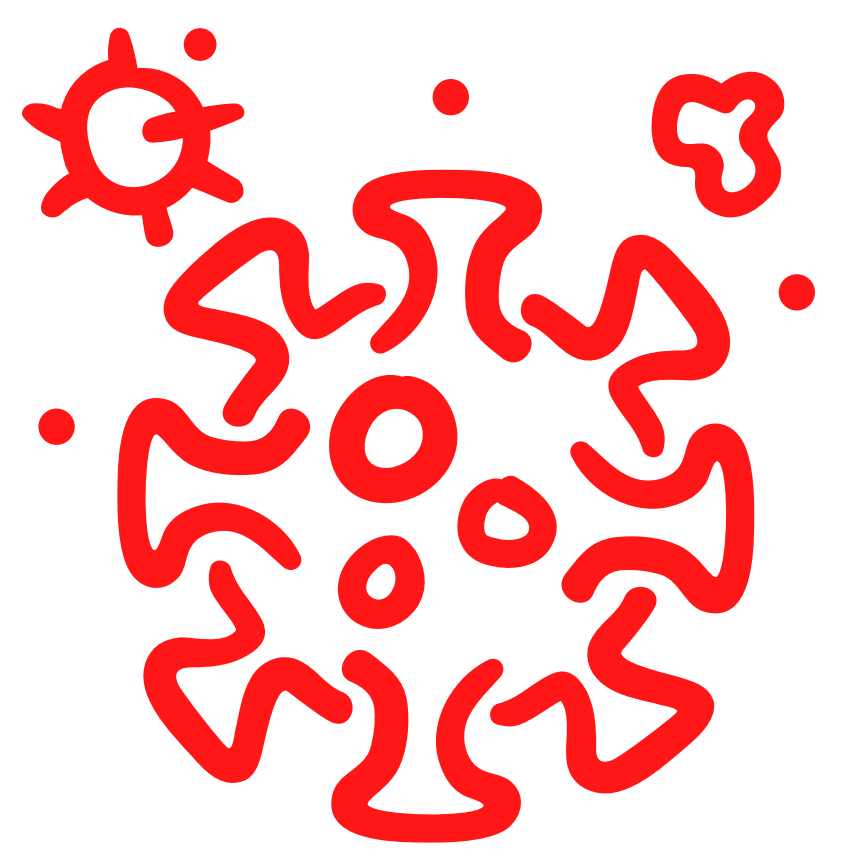


COVID-19 Testing for Greene and surrounding counties:



GREENE COUNTY

Greene County Health Department

Registration is preferred, but drive ups are allowed

658 US 231
Bloomfield, IN 47424
at the Northwest Bank drive up bank building

Monday, Wed, Friday & Saturdays
8 a.m. - 1 p.m.
Tues & Thurs
1 p.m. - 6 p.m.

My Clinics
812-847-4481

Testing by Provider's order only

My Linton Clinic
1210 N 1000 W
Linton, IN 47441

Monday - Friday
9 a.m. - 7 p.m.
Saturdays & Sundays
9 a.m. - 4 p.m.

My Bloomfield Clinic
55 N. Judge Street
Bloomfield, IN 47424

Monday - Friday
7 a.m. - 5 p.m.

My Worthington Clinic
102 E. Main Street
Worthington, IN 47471

Monday - Friday
7 a.m. - 5 p.m.

My WestGate Clinic
1985 E. Freedom Drive
Newberry, IN 47449

Monday - Friday
7 a.m. - 5 p.m.

Greene County Health, Inc.

1600 A St. NE
Linton, IN 47441
812-847-7005

Monday - Friday
7 a.m. - 5 p.m.

SULLIVAN COUNTY

Respiratory Care Clinic
(FPA QuickCare)

Testing by provider's
order only

2200 N Section Street A
Sullivan, IN 47882
812-268-6292

Monday, Thursdays,
Fridays and Saturdays
7:30 a.m. - 4:00 p.m.
Tuesdays and
Wednesdays
7:30 a.m. - 6:30 p.m.

Gravity COVID Testing
Site

Walk in

35 West Wall St.
Sullivan, IN 47882
former Sullivan Co. EMA
office building

Tuesday - Saturday
8 a.m. - 4 p.m.

OWEN COUNTY

CVS Pharmacy

By appointment only

860 W Morgan Street
Spencer, IN 47460
812-829-2484

Owen County Health
Department

By appointment only
Drive up, pull up to side of
Health Depart. building

86 E Market Street
Spencer, IN 47460
812-829-5017

Mondays, Tuesdays &
Fridays
8 a.m. - 4 p.m.
Wednesdays & Thursdays
12 p.m. - 7 p.m.
Saturdays
8 a.m. - 12:00 p.m.

Testing sites, days and times are subjected to change. Please call each site for the most up to date information. For Greene County General Hospital and My Clinic's current COVID-19 information, please check our COVID-19 info webpage at:
<https://greenecountyhospital.com/covid-19-information/>